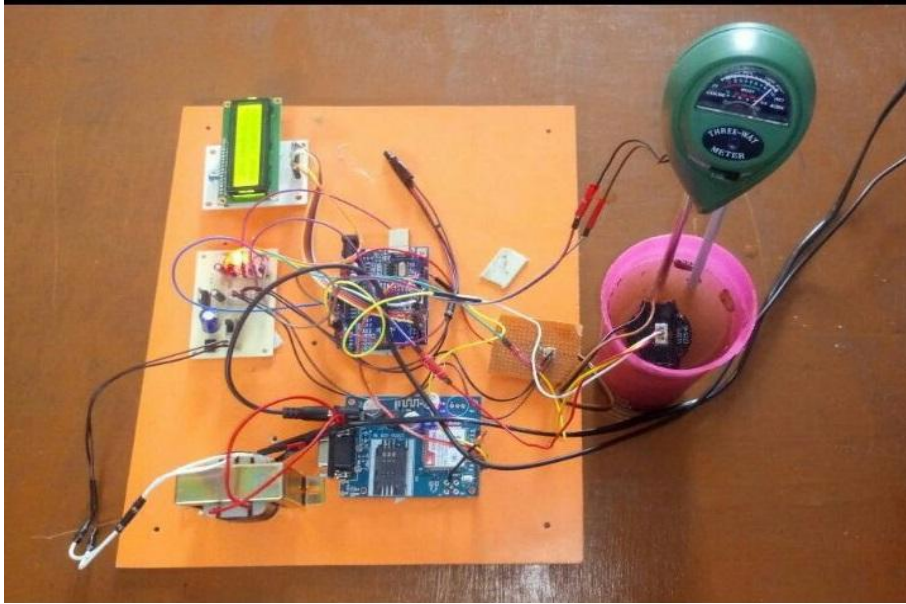


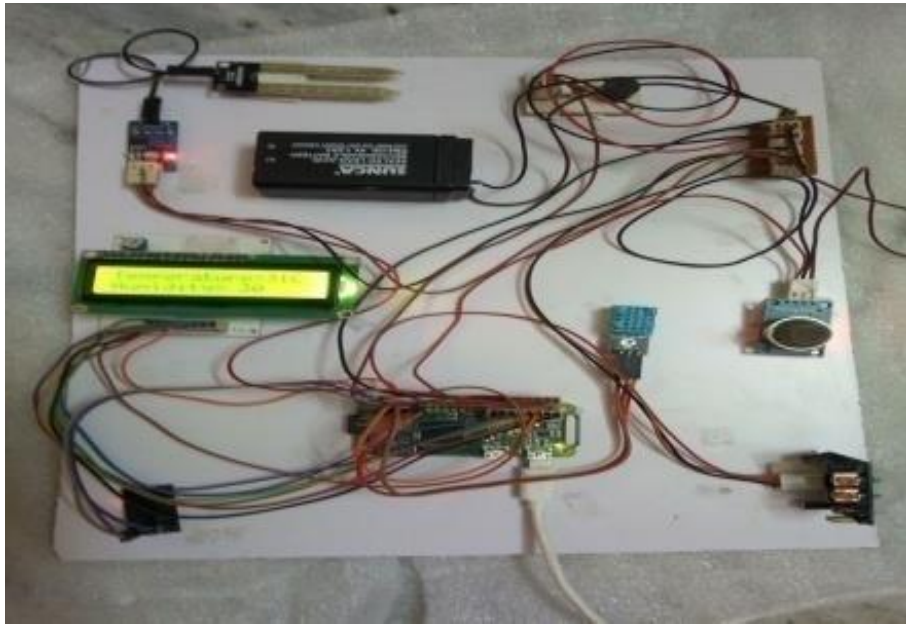
## Student Projects

**A.Y: 2017-18**

<b>S.No.</b>	<b>Roll No.</b>	<b>Name of the Student</b>	<b>Project Title</b>
1	1608-14-735-001 1608-14-735-023 1608-14-735-045	V. Mounika V.SaiDeepthi D. Prithvi K.	Monitoring road surface aberrations and potholes using a wireless sensor network
2	1608-14-735-008 1608-14-735-018 1608-14-735-044	N.Sai Krishna G. Ashwith B. Rakesh	A Raspberry Pi based Global industrial monitoring through wireless communication
3	1608-14-735-016 1608-14-735-029 1608-14-735-032	Ch. S Krishna Mohan K. SaiBharath T.Vamshi Krishna	Smart Integrated system for riders safety
4	1608-14-735-069 1608-14-735-090 1608-14-735-095	Ms. P.V.S.Vishnu Vandana V.N.Nitin P.Prashanth Yadav	Text To Speech Conversion Using OCR Technique
5	1608-14-735-061 1608-14-735-068 1608-14-735-078	Ms. K.Vinitha V.Pravalika R.Sai Akhil	A Novel Algorithm Of Deep Representation For Iris Spoofing Detection
6	1608-14-735-066 1608-14-735-075 1608-14-735-086	Mr. P.Nikhil Reddy R.Buchhi Babu B.Chandra Shekhar	Audio Watermarking Using Fibonacci Series
7	1608-14-735-072 1608-14-735-080 1608-14-735-099	Mr.P.Pruthvi Raj Reddy T.S.Anirudh H.M.Rohan	Movable Road Divider For Organized Vehicular Traffic Control With Monitoring Over Internet Of Things (IOT)
8	1608-14-735-015 1608-14-735-017 1608-14-735-043	G. Pranaya D. Niharika Sk. Feroz baba	A 64 Bit Mac Unit Design Using Reversible Logic Gate And Vedic Multiplier
9	1608-14-735-037 1608-14-735-039 1608-14-735-311	K. Sushmitha Y. Sanjana Ch. Sirisha	Reconfigurable Smart Water Quality Monitoring System in IoT Environment



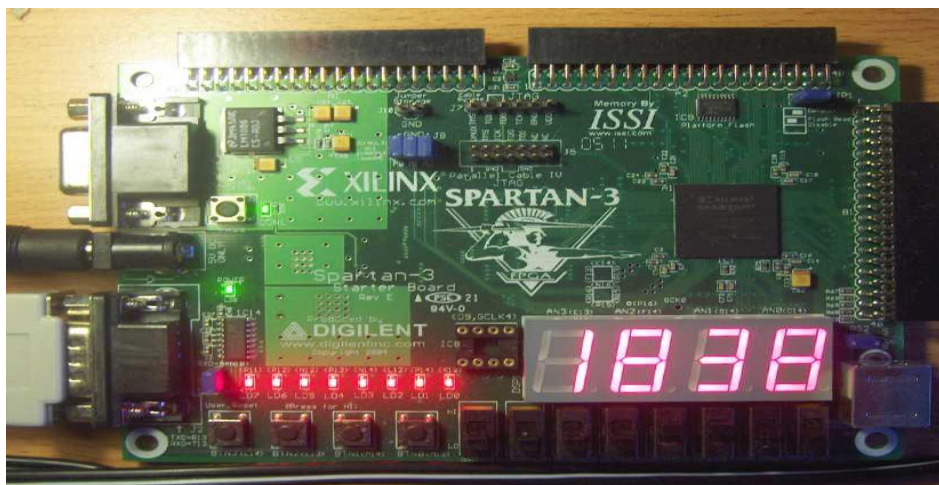
Reconfigurable Smart Water Quality Monitoring System in IoT Environment



A Raspberry Pi based Global industrial System in IoT Environment

**A.Y: 2016-17**

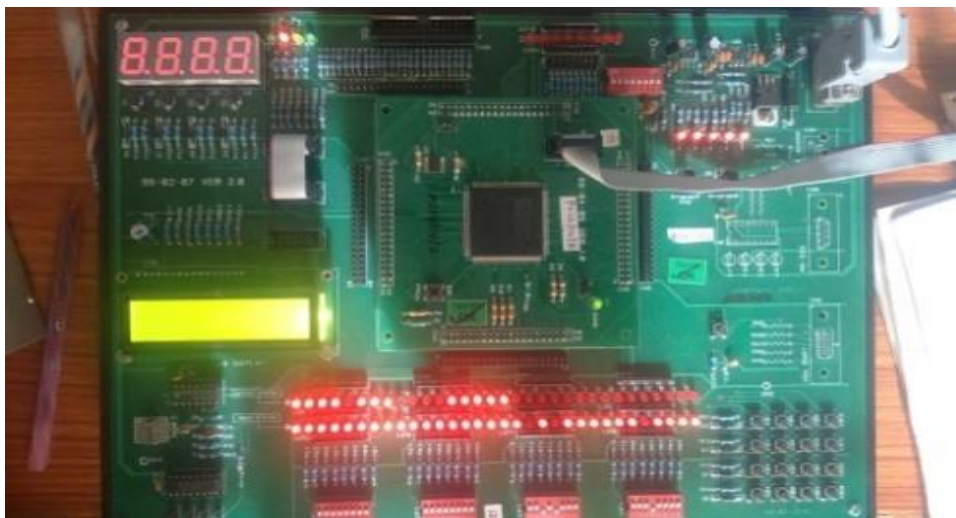
S.No.	Roll No.	Name of the Student	Project Title
1	1608-13-735-004 1608-13-735-011 1608-13-735-018	G. Sanjana K.Sajith Reddy B.Subramanyam	PCB Error detection and Correction using Image Processing and Embedded System
2	1608-13-735-005 1608-13-735-024 1608-13-735-034	C. Mahesh Rvs Deepak H Supriya	Cerebral Automation
3	1608-13-735-010 1608-13-735-017 1608-13-735-022	K. Pradeep Kumar N.Vamshidhar Ch.Shreelasya	Android Controlled Pick and Place Robotic Arm Vehicle
4	1608-13-735-016 1608-13-735-031 1608-13-735-056	G Vaishnavi D Rajesh M Gouthamdeep	Mobile Communication Device for the Blind using Braille System
5	1608-13-735-019 1608-13-735-046 1608-13-735-053	D. Balaji Reddy E. Naresh Kumar N.Srikanth	Coin Based Solar Mobile phone Charger
6	1608-13-735-061 1608-13-735-069 1608-13-735-084	Abhay Kavya.V Sai Deepika.M	Energy harvesting and consumption reduction in wireless sensor networks
7.	1608-13-735-047 1608-13-735-052 1608-13-735-305	ShiekMohsina NaziyaSulthana K Gresshmanjali	High Speed Modified Booth Encoder Multiplier for Signed and Unsigned Numbers



High Speed Modified Booth Encoder Multiplier for Signed and Unsigned Numbers

**A.Y: 2015-16**

<b>S.No.</b>	<b>Roll No.</b>	<b>Name of the Student</b>	<b>Project Title</b>
<b>1</b>	1608-12-735-012 1608-12-735-059	T. Divya Madhuri	Implementation of CCSDS Standard Convolutional Decoder Using Viterbi Algorithm
<b>2</b>	1608-12-735-029 1608-12-735-031 1608-12-735-036	Manaswini Challa Jaya V. R krishna Sai Sruthi.B	Design and analysis of Vival di Antenna And Band Pass Filter For Ultrahigh Band Applications
<b>3</b>	1608-12-735-001 1608-12-735-041 1608-12-735-307	Ch Kiranmai G Sree Vani Vinod	Multi Channel AMBA AHB With Round Robin Arbitration Technique
<b>4</b>	1608-12-735-081 1608-12-735-083	G. Mallika Reddy E. Aishwarya	Radars Signal Simulation
<b>5.</b>	1608-12-735-084 1608-12-735-094 1608-12-735-096	A.Aparna Manne Ruchitha R. Sumalatha	Automatic Railway Gate Control or Automatic Garbage Vehicle Tracking
<b>6.</b>	1608-12-735-063 1608-12-735-070 1608-12-735-080	G. Shravya K. Navya Asha Mukhi	Touch Screen Based Remote Controller Robot With Wireless Camera.
<b>7.</b>	1608-12-735-009 1608-12-735-038 1608-12-735-058	S. Navneeth T. Nikitha J. Shirisha	Design Of Low Power And High Speed Carry Brenl Kung Adder



Design Of Low Power And High Speed Carry Brenl Kung Adder



Touch Screen Based Remote Controller Robot With Wireless Camera.